

Research/Technical Note

A Short Note on the Petroleum Potential of the Sokoto Basin in North-western Nigeria

Nuhu George Obaje^{1,5,*}, Umar Zaki Faruq², Abdullahi Bomai³, Sunday Dabai Moses³, Mohammed Ali³, Suleiman Adamu³, Alfred Essien⁴, Umar Lamorde⁴, Umar Mohammed Umar⁵, Toochukwu Ozoji⁵, Perpertua Okonkwo⁶, Lukman Adamu⁷, Abdullahi Idris-Nda⁸

¹Nigerian National Petroleum Corporation Chair in Basinal Studies, Ibrahim Badamasi Babangida University, Lapai, Nigeria

²PTDF Chair, Usmanu Danfodio University, Sokoto, Nigeria

³Frontier Exploration Services, Nigerian National Petroleum Corporation, Abuja, Nigeria

⁴Research & Development Division, Nigerian National Petroleum Corporation, Portharcourt, Nigeria

⁵Department of Geology, Ibrahim Badamasi Babangida University, Lapai, Nigeria

⁶Department of Chemistry, Ibrahim Badamasi Babangida University, Lapai, Nigeria

⁷Department of Earth Sciences, Kogi State University, Anyigba, Nigeria

⁸Department of Geology, Federal University of Technology, Minna, Nigeria

Email address:

nobaje@yahoo.com (N. G. Obaje), nobaje@ibbu.edu.ng (N. G. Obaje)

*Corresponding author

To cite this article:

Nuhu George Obaje, Umar Zaki Faruq, Abdullahi Bomai, Sunday Dabai Moses, Mohammed Ali, Suleiman Adamu, Alfred Essien, Umar Lamorde, Umar Mohammed Umar, Toochukwu Ozoji, Perpertua Okonkwo, Lukman Adamu, Abdullahi Idris-Nda. A Short Note on the Petroleum Potential of the Sokoto Basin in North-western Nigeria. *Petroleum Science and Engineering*. Vol. 4, No. 1, 2020, pp. 34-38. doi: 10.11648/j.pse.20200401.14

Received: February 12, 2020; **Accepted:** February 27, 2020; **Published:** March 18, 2020

Abstract: The stratigraphy of the Sokoto Basin has the Illo/Gundumi Formation at the bottom, followed successively upward by the Taloka, Dukamaje, Wurno, Dange, Kalambaina, Gamba and Gwandu Formations. Re-mapping of the basin carried out in this study shows that the geological framework remains largely as previously outlined except that some hitherto unreported tectonically controlled structures have been documented. The basin is generally shallower at the margin and deepens towards the centre such that the areas around the border with Niger Republic are deepest and hence most prospective on the Nigerian side. Geophysical aeromagnetic interpretation has assisted to analyze the depth to basement configurations. Organic geochemical studies show that the dark shales and limestones of the Dukamaje Formation constitute the source rocks in the potential petroleum system. With averages for source rock thickness of 50m, area of basin of 60,000km², TOC of 7.5wt%, and HI of 212mgHC/gTOC, charge modeling indicates 808.10 million barrels of oil equivalent extractable hydrocarbons in the Sokoto Basin, at current knowledge of the geology and if the appropriate maturity has been attained at deeper sections. The sandstones of the Illo/Gundumi Formation as well as in the Taloka and Wurno Formations and carbonates of the Kalambaina Formation provide potential reservoir packages. The paper shale of the Gamba Formation and the clays of the Gwandu Formation provide regional seals. If the presently mapped tectonic structures are ubiquitous in the whole basin, structural and stratigraphic traps may upgrade the petroleum system. Other petroleum systems may exist in the basin with either or both the Illo/Gundumi and Taloka Formation (s) providing the source and reservoir rocks.

Keywords: Sokoto Basin, Dukamaje Formation, Hydrocarbons, Petroleum System, Reservoirs

1. Introduction

The Sokoto Basin (Figure 1) is one of Nigerian sedimentary basins that are tectonically and paleogeographically related. These basins are a part of Nigeria's inland basins that constitute another set of a series of Cretaceous and later rift basins in Central and West Africa whose origin is related to the opening of the South Atlantic [1]. Commercial hydrocarbon accumulations have been discovered in several basins within this rift structure [2, 3]. The Sokoto Basin is predominantly a gently undulating plain with an average elevation varying from 250 to 400 metres above sea-level in north-western Nigeria. This plain is occasionally interrupted by low mesas.

A low escarpment, known as the “Dange Scarp” is the most prominent feature in the basin and it is closely related to the geology [4]. The Sokoto Basin (as so-called in Nigeria) is the south-eastern sector a larger Iullemeden Basin. The Iullemeden Basin itself is a broader sedimentary basin covering, apart from north-western Nigeria, most parts of Niger, Benin, Mali, Algeria and Libya with the major depocentres situated in Niger Republic. The Sokoto sector is an out-baying marginal basin with reduced sediment thickness and stratigraphic age from the thickest and oldest in Niger Republic to the youngest towards Nigeria [5].

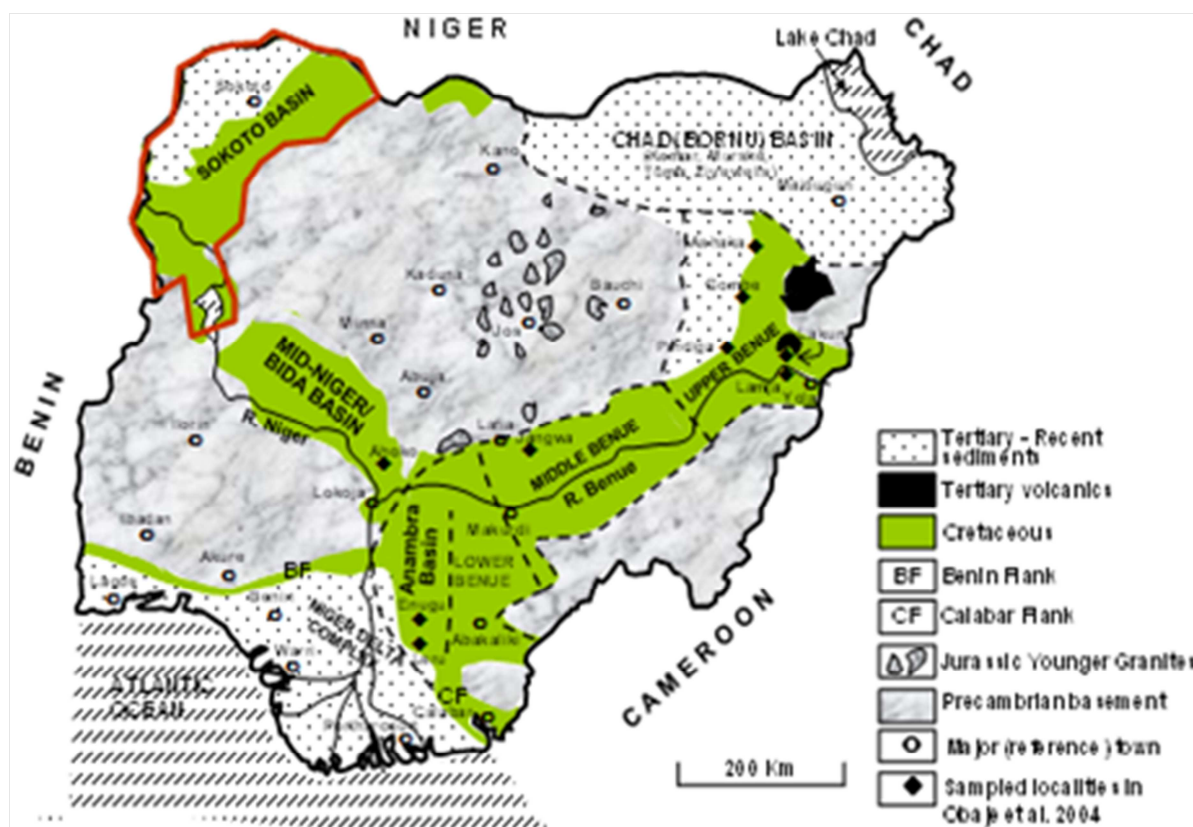


Figure 1. Generalized geological map of Nigeria showing the location of the Sokoto Basin (modified from [1]).

2. Stratigraphy

The sediments of the Iullemeden Basin were accumulated during four main phases of deposition. Overlying the Pre-Cambrian Basement unconformably, the Illo and Gundumi Formations, made up of grits and clays, constitute the pre-Maastrichtian “Continental Intercalaire” of West Africa. They are overlain unconformably by the Maastrichtian Rima Group, consisting of mudstones and friable sandstones (Taloka and Wurno Formations), separated by the fossiliferous, calcareous and shaley Dukamaje Formation. The Dange and Gamba Formations (mainly shales) separated by the calcareous Kalambaina Formation constitute the Paleocene Sokoto Group. The overlying continental Gwandu Formation forms the Eocene Continental Terminal. These sediments dip

gently and thicken gradually towards the northwest with maximum thicknesses attainable toward the border with Niger Republic.

The “Continental Intercalaire” is important in Africa. The Karoo Series of South Africa can be correlated with the upper beds of the lower portion of the “Continental Intercalaire” [6, 7]. The “Continental Intercalaire” corresponds to the upper part of the Nubian Sandstone, which, in the Arabo-Nubian shield, begins at the base of the Palaeozoic. The Iullemeden Basin, as well as many other parts of North and South Africa experienced extensive periods of continental sedimentation with the accumulation of fluvio-lacustrine sediments in pre-Cenomanian times. The northern limit of the continental deposition coincides with the Algeria-Moroccan Sahara and extends eastward into Egypt and the Sudan. The southern limits extend as far as South Africa.

3. Geology

Detailed geological mapping was carried by the authors as augmentation to the work of the team of geologists from the Ahmadu Bello University, Zaria under the leadership of Prof. C. A. Kogbe whose reports were published in [8, 9]. This information was complemented by [10, 11]. On the basis of geological traverses taken across the basin (Figure 2), the geological map shown in Figure 3 has been prepared. The geological mapping undertaken reveals some details of the composition and aerial extent as well as the inferred boundaries of the formations in the Sokoto Basin. The delineation of inferred boundaries between the formations in the basin is a significant criterion in evaluating the hydrocarbon prospectivity. Subsurface reservoir characteristics were also inferred from outcrop-stratigraphic sections encountered during the geological mapping exercise. The geological map, in a general assessment, conforms to earlier maps produced by previous workers with some minor

modifications. For example, the organic matter-rich carbonaceous shales within the Taloka Formation at Goronyo are first identified in this study. Cross-sections across the basin show the Sokoto Basin deepens towards the border with Niger Republic (Figure 4).



Figure 2. Logging the carbonaceous/coaly facies of the Taloka Formation on the Taloka- Goronyo road.

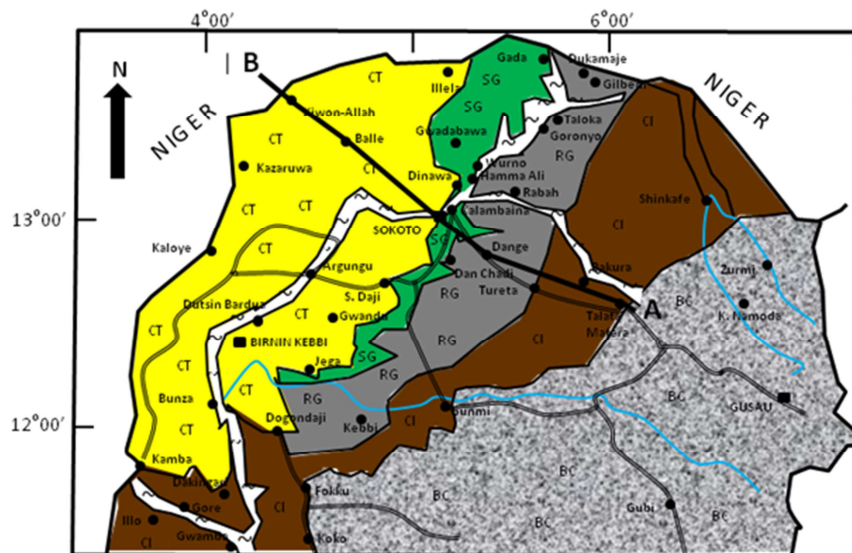


Figure 3. Updated geological map of the Sokoto Basin (prepared in this study).

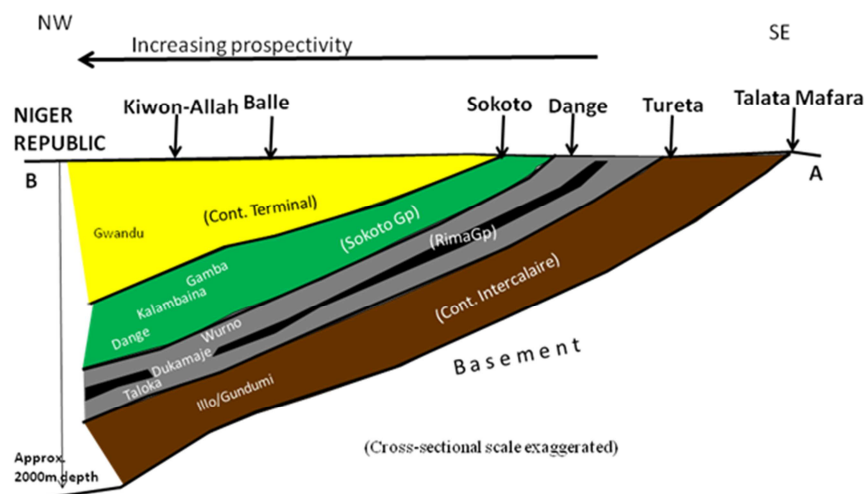


Figure 4. Line of section A-B (Talata Mafara – Kiwon-Allah) showing that geologically most prospective areas are towards the border with Niger Republic as the sediment piles get thicker. Aeromagnetic and seismic data interpretation may result in a different scenario.

4. Aeromagnetic Geophysics

Preliminary interpretation of the geophysical aeromagnetic data over the Sokoto Basin by [11] agrees generally with the geological mapping interpretation that shows that prospectivity increases towards the border with Niger Republic but with the addition of prospective areas in updip sections of the basin around Tureta, Bakura, SabonBirni and Isah located on the Illo/Gundumi/Taloka Formations. The interpreted aeromagnetic data map shows many troughs, trenches, ditches, sinks and holes (prospective areas) (indicated in blue). However, eight areas are discernibly highly ranked at this stage, pending future seismic investigations. These areas comprise the:

1. Yerimawa-SabonBirni-Isah trough.
2. Wurno-Rabah trench.
3. Sokoto-Bodinga-Tambulwa trench.
4. Tureta-Bakura ditches.
5. Lema-Tambo sinks.
6. Koko-Giro sinks.
7. Gada holes.
8. Kiwon Allah-Sokwoi-Illela pits.

Although the interpreted aeromagnetic data did not give exact depth to basement, it has indicated that most of the identified prospective areas have sediment thickness up to 3,000m (3km).

In the Sokoto Basin, the sandstones of the Illo/Gundumi Formation as well as in the Taloka and Wurno Formations and carbonates of the Kalambaina Formation provide potential reservoir packages. The paper shale of the Gamba Formation and the clays of the Gwandu Formation provide regional seals.

5. Geochemistry and Charge Modeling

Ninety percent of the samples examined in the Sokoto Basin have equal or more than the minimum limit of TOC value (0.5wt%) required to initiate hydrocarbon generation from source rocks. TOC decreases with depth in the Gada borehole and increases with depth in the Wurno borehole down until 27m.

On the basis of parameters defined by [12], evaluation of maturity level by Tmax for the Sokoto Basin shows that the source rocks (made up of the carbonaceous shale intervals of the Taloka and Dukamaje Formations) are sub-mature (Wurno samples) through marginally mature (Gada samples) to mature within the main oil window (Goronyo and Illela samples).

Juxtaposition of the HI against the Tmax (thermal maturity) shows that the source rocks in the Sokoto Basin are slightly below the entrant to the oil window (slightly immature to early mature) (Wurno and Gada samples) to appropriately mature within the main oil window (Goronyo and Illela samples). The interpretation, however, represents results on samples obtained at the surface to maximum 120m depth. At greater depths, majority of the samples would have entered the main oil window to generate mainly gas and some oil.

With averages for source rock thickness of 50m, area of

basin of 60,000km², TOC of 7.5wt%, and HI of 212mgHC/gTOC (putting several results together), charge modeling indicates 808.10 million barrels of oil equivalent extractable hydrocarbons in the Sokoto Basin, if the appropriate maturity has been attained at deeper sections and if other petroleum system requirements are available (good quality reservoir, traps, etc).

6. Potential Petroleum System

Some lacustrine carbonaceous shales within the Continental Intercalaire could constitute potential source rocks. The Dukamje Formation (Maastrichtian) is the major potential source rock in the Sokoto Basin. It correlates with the Nkporo Shale in the Anambra Basin and the Enagi/Patti Formation in the Mid-Niger (Bida) Basin. Sandstone facies in all the formations and the large carbonate deposits of the Kalambaina Formation are potential reservoir rocks. The Dange and Gambashales as well as the thick clays within the Gwandu Formation constitute regional seals. Some folded and reversed fault structures have been mapped on outcrops and sections exposed along the Goronyo – Taloka road (Figure 5). If these mapped tectonic structures are ubiquitous in the whole basin, structural and stratigraphic traps may upgrade the petroleum systems.

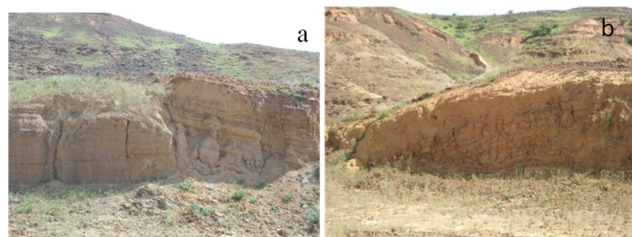


Figure 5. Tectonic features in the Sokoto Basin within the Taloka Formation on the Taloka-Goronyo road: (a) Reverse fault? (b) rollover anticline?

7. Conclusions

The Sokoto Basin is one of Nigeria's inland frontier basins. The origin of these basins is related to the opening of the South Atlantic and the accompanying rifting in many areas of Western and Central Africa. Basinal fills comprising pre-Campanian fluvio-deltaic sediments, Campanian-Maastrichtian continental and marginal marine sediments as well as marine Paleocene and continental Eocene sediments make up the sediment fills in the Sokoto Basin. Source rocks of Campanian-Maastrichtian age run in a linear belt from the Anambra Basin in the southeast through the Bida Basin in the central region into the Sokoto Basin in the northwest of Nigeria. Potential petroleum systems exist in the Sokoto Basin. Geochemical results obtained on surface and near surface samples from the basins, however, show that organic matter in the source rocks are immature to sub-mature but may have attained the appropriate maturity at deeper depths to generate mainly gas and some oil. Structures related

to tectonics had not been previously documented in the Sokoto Basin. This paper has brought some new insights on the possible existence of tectonically originated structures in the Sokoto Basin.

Acknowledgements

Acknowledgments are reserved for the Nigerian National Petroleum Corporation, the Ibrahim Badamasi Babangida University Lapai and the Sokoto State Government for supporting different aspects of the Sokoto Basin hydrocarbon prospectivity evaluation.

References

- [1] Schull, T. J. (1988). Rift basins of interior Sudan: petroleum exploration and discovery. AAPG Bulletin, 72: 1128-1142.
- [2] Whiteman, A. (1982). Nigeria: Its Petroleum Geology, Resources and Potential. Graham and Trotman, London, 381pp.
- [3] Zanguina, M., Bruneton A. and Gonnard, R. (1998). An introduction to the petroleum geology of Niger. Journal of Petroleum Geology, 21: 83-103.
- [4] Obaje, N. G. (1987). Foraminiferal biostratigraphy and paleoenvironment of the Sokoto Basin of NW Nigeria. M. Sc Thesis, Ahmadu Bello University, Zaria, 76pp.
- [5] Obaje, N. G. (2009). Geology and Mineral Resources of Nigeria. Springer, Heidelberg, 221pp.
- [6] Obaje, N. G., Wehner, H., Scheeder, G., Abubakar, M. B. and Jauro, A. (2004). Hydrocarbon prospectivity of Nigeria's inland basins: from the viewpoint of organic geochemistry and organic petrology. AAPG Bulletin, 87: 325-353.
- [7] Adeleye, D. R. (1975). Nigerian Late Cretaceous stratigraphy and paleogeography. AAPG Bulletin, 59: 2302-2313.
- [8] Kogbe, C. A. (1981). Cretaceous and Tertiary of the Iullemmeden Basin of Nigeria (West Africa). Cretaceous Research, 2: 129-186.
- [9] Kogbe, C. A. (1979). Geology of the South-eastern (Sokoto) Sector of the Iullemmeden Basin. Dept. of Geology, Ahmadu Bello. University Zaria Bulletin, 32: 1-142.
- [10] Petters, S. W. (1982). Central West African Cretaceous-Tertiary benthic foraminifera and stratigraphy. Palaeontographica, Abt. A 179: 1-104.
- [11] Obaje, N. G., Aduku, M., and Yusuf, I. (2013). The Sokoto Basin of Northwestern Nigeria: A preliminary assessment of the hydrocarbon prospectivity. Petroleum Technology Development Journal, 3 (2): 71-86.
- [12] Peters, K. E. (1986). Guidelines for evaluating petroleum source rocks using programmed pyrolysis. AAPG Bulletin 70, 318-329.